

901-915 KALAMALKA LAKE ROAD, VERNON
INDUSTRIAL AND SECURED YARD SPACE AVAILABLE

**FOR
LEASE**



WILLIAM | WRIGHT

SHELBY KOSTYSHEN
shelby.kostyshen@williamwright.ca
236.420.3558

JEFF HANCOCK
PERSONAL REAL ESTATE CORPORATION
jeff.hancock@williamwright.ca
236.420.3558



OVERVIEW

Multiple industrial units and secured yard space available in the Middleton industrial area of Vernon. Great spaces for commercial shops, storage, and other light industrial uses. Units can be leased together or separately depending on the needs of your business. The property is easily accessible off of Kalamalka Lake Road from Hwy 6 or Hwy 97 which is just 5 minutes from downtown Vernon.

PROPERTY HIGHLIGHTS



Move-In Ready



Zoning: INDL – Light Industrial



Flexible Lease Terms

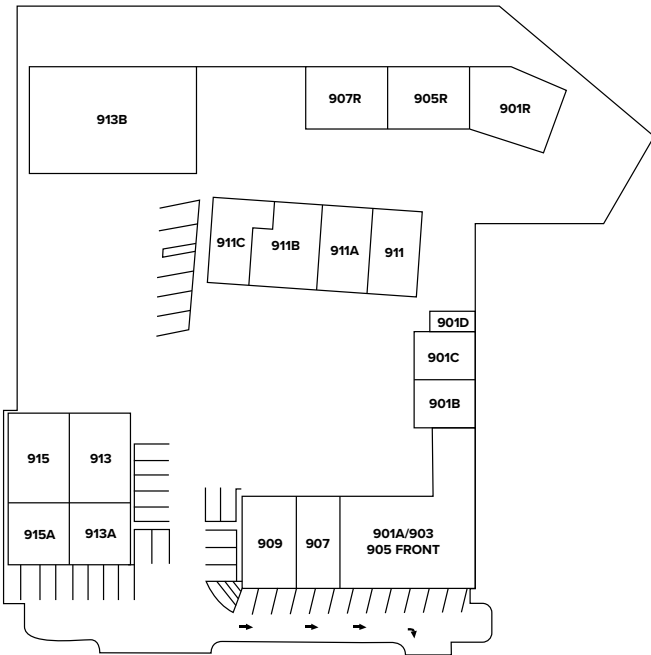


Varying Unit Sizes Available



UNITS AVAILABLE

- UNDER CONTRACT/LEASED
- AVAILABLE



Unit	Size (SQFT)	Basic Rent	Add. Rent	Availability
905R	1,000	\$14.00/FT	\$5.21/FT	Available Now
907R	10,000	\$2000/mth	Flat Rate	Available Now
911	880	\$14.00/FT	\$5.21/FT	Available Now
911B	1,350	\$14.00/FT	\$5.21/FT	Available Now

Retail and Office units available, please contact listing brokers for more information.



**UNITS
905R/907R**

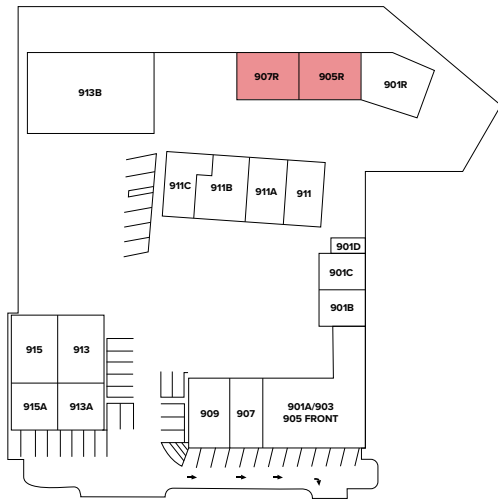
905R



905R



905R



907R



Unit	Size (SQFT)	Basic Rent	Add. Rent	Availability
905R	1,000	\$14.00/FT	\$5.21/FT	Available Now
907R	10,000	\$2000/mth	Flat Rate	Available Now

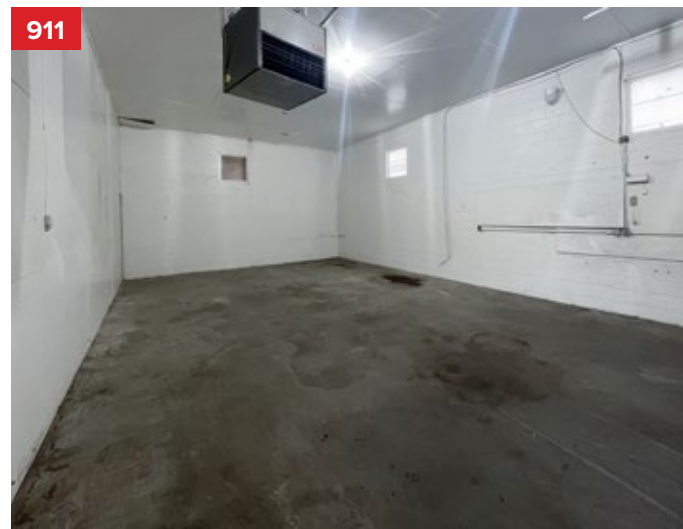


UNITS
911/911B

911B



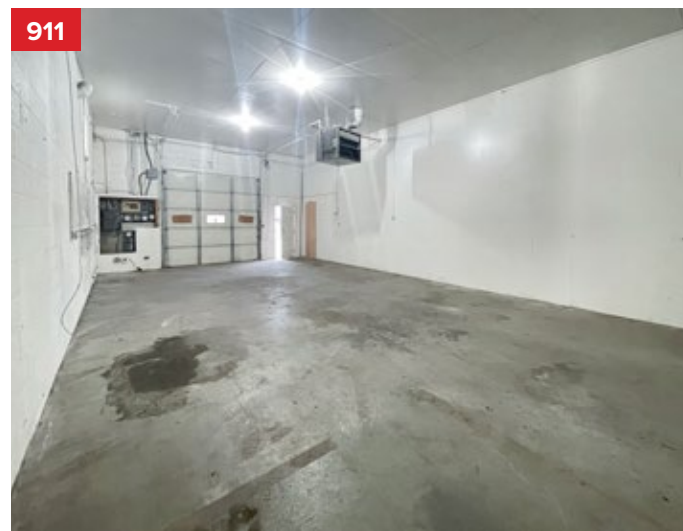
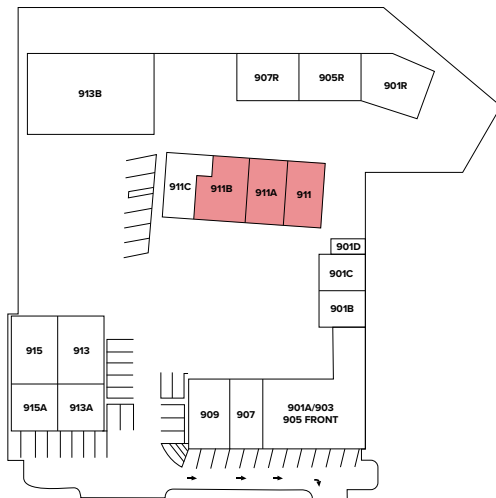
911B



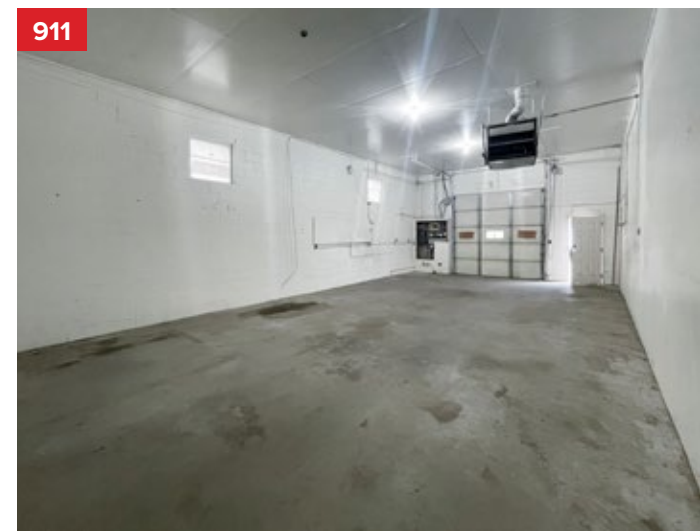
911



911B

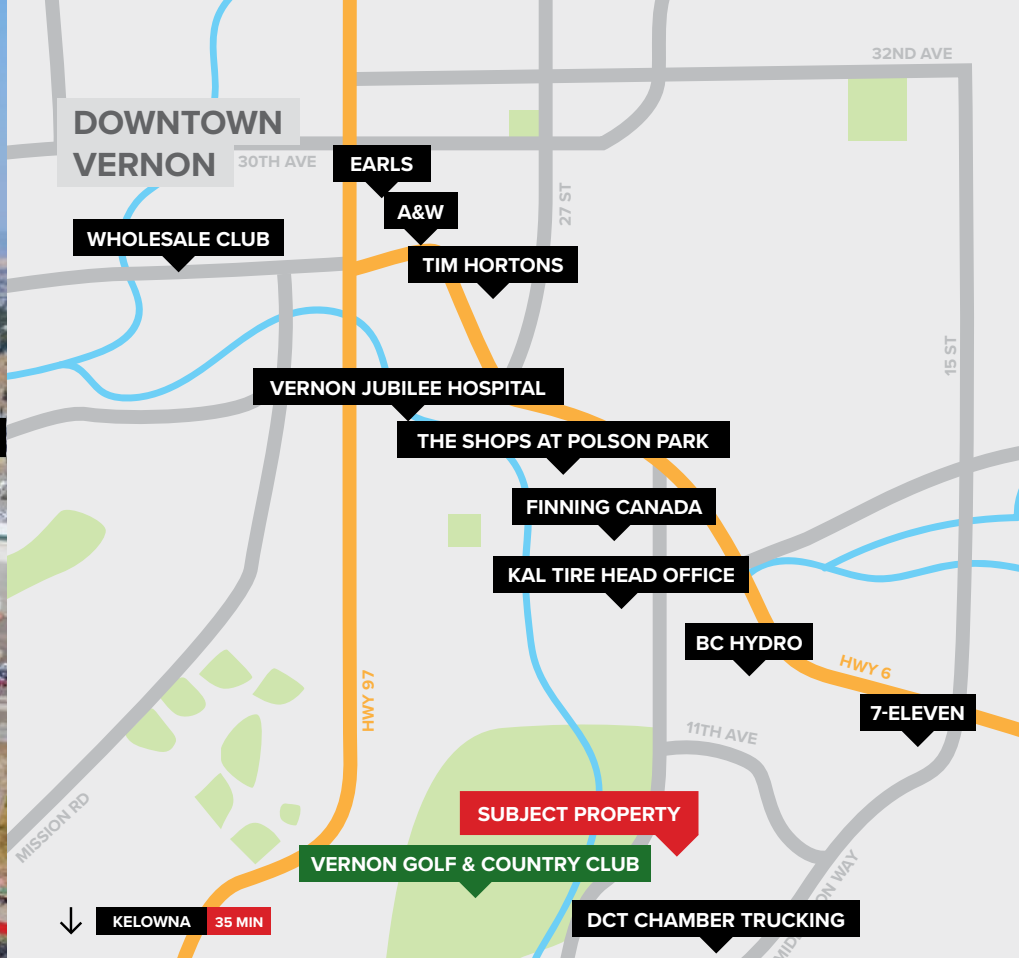


911



911

Unit	Size (SQFT)	Basic Rent	Add. Rent	Availability
911	880	\$14.00/FT	\$5.21/FT	Available Now
911B	1,350	\$14.00/FT	\$5.21/FT	Available Now



LOCATION

Hwy 6 to Kalamalka Lake Rd. South on Kalamalka Lake Rd on the left handside across from Vernon Golf & Country Club.

FOR MORE INFORMATION CONTACT

SHELBY KOSTYSHEN
 shelby.kostyshen@williamwright.ca
 236.420.3558

JEFF HANCOCK
 PERSONAL REAL ESTATE CORPORATION
 jeff.hancock@williamwright.ca
 236.420.3558